



## PRODUCT LINE

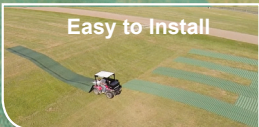
# GrassGuard<sup>®</sup>

www.grassguard.biz

## Grass Reinforcement Mesh

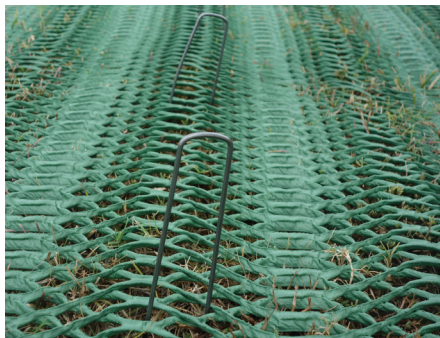
A Product by Industrial Fabrics, Inc.

PRODUCT	Thickness (in)	ROLL SIZES AVAILABLE
<b>GrassGuardSD</b> (Standard Duty) Scour protection, light traffic areas, walkways, bike paths, handicap access	0.43"	3.5' x 33'
<b>GrassGuardHD</b> (Heavy Duty) Heavier traffic areas, parking lots, R.V. parking, access bays, equestrian paths, landing pads, taxiways	0.55"	3.5' x 66'
<b>GrassGuardHD<sup>X</sup></b> (Heavy Duty Xtra) (Heavy Duty with a TRIAX TX160 Geogrid backing) Areas where additional reinforcement may be required	0.56"	7' x 33'
<b>Master Rolls</b> Only available in SD or HD.	0.43" or 0.55"	7' x 66'
		7' x 350'



## Accessories

### EASY, QUICK INSTALLATION - NO DIGGING!



#### SOD STAPLES

Perfect for use in grassy, landscaped, or wooded areas.

#### Specifications:

- 1000 or 500 staples per box (depending on size)
- 60 boxes per pallet
- 6" x 1" x 6" 11 gauge wire
- 8" x 1" x 8" (500/box) 11 gauge wire\*
- 8" x 2" x 8" (500/box/) 11 gauge wire\*

\*8 gauge available by special order



#### SOD PINS

Perfect for use in grassy, landscaped, wooded or firmer areas.

#### Specifications:

- 100/box
- Size: 12" with washer



GrassGuard<sup>®</sup> (225) 273-9600 • 800-848-4500 • 510 O'Neal Lane Ext., Baton Rouge, LA 70819

GrassGuard may change product specifications without notice. The GrassGuard system is suitable for use in the application described in our literature and on our website, provided proper installation and engineering principles are followed. Professional engineering should be consulted before installation of GrassGuard units to assure proper design. ALL EXPRESSED OR IMPLIED WARRANTIES, INCLUDING THOSE OF MERCHANTABILITY AND FITNESS FOR A PARTICULAR PURPOSE ARE DISCLAIMED.

REV. 1016 2017