



PRODUCT LINE

GrassGuard[®]

www.grassguard.biz[®]

Grass Reinforcement Mesh

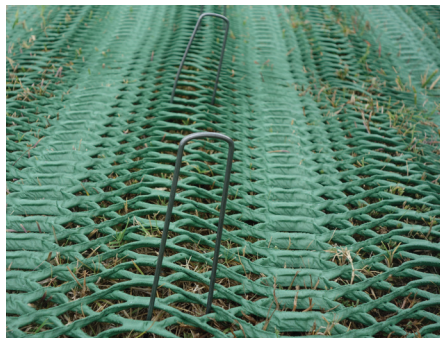
A Product by Industrial Fabrics, Inc.

PRODUCT	Thickness (in)	ROLL SIZES AVAILABLE
GrassGuardSD (Standard Duty) Erosion protection, light traffic areas, walkways, bike paths, handicap access	0.43"	4' x 25'
GrassGuardHD (Heavy Duty) Heavier traffic areas, parking lots, R.V. parking, access bays, equestrian paths, landing pads, taxiways	0.55"	4' x 50'
GrassGuardHD^X (Heavy Duty Xtra) (Heavy Duty with a BaseLok [®] BX Geogrid backing) Areas where additional reinforcement may be required	0.60"	8' x 25'
Master Rolls Only available in SD or HD.	0.43" or 0.55"	8' x 350'



Accessories

EASY, QUICK INSTALLATION - NO DIGGING!



SOD STAPLES

Perfect for use in grassy, landscaped, or wooded areas.

Specifications:

- 1000 or 500 staples per box (depending on size)
- 60 boxes per pallet
- 6" x 1" x 6" 11 gauge wire
- 8" x 1" x 8" (500/box) 11 gauge wire*
- 8" x 2" x 8" (500/box/) 11 gauge wire*

*8 gauge available by special order



SOD PINS

Perfect for use in grassy, landscaped, wooded or firmer areas.

Specifications:

- 100/box
- Size: 12" with washer



GrassGuard[®] (225) 273-9600 • 800-848-4500 • 510 O'Neal Lane Ext., Baton Rouge, LA 70819

Customer should verify with the product manufacturer that customer has the most current GrassGuard[®] specifications for the product ordered or purchased. The GrassGuard[®] system can be used in the application described in our literature and on our website, provided proper installation and engineering principles are followed. Professional engineering should be consulted before installation of GrassGuard[®] units to assure appropriate design and use. ALL EXPRESSED OR IMPLIED WARRANTIES, INCLUDING THOSE OF MERCHANTABILITY AND FITNESS FOR A PARTICULAR PURPOSE ARE DISCLAIMED. GrassGuard[®] is a trademark of Industrial Fabrics, Inc.